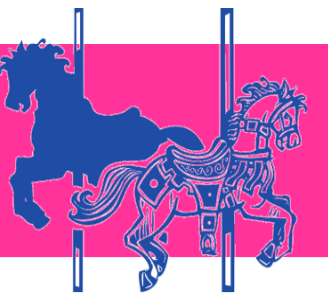




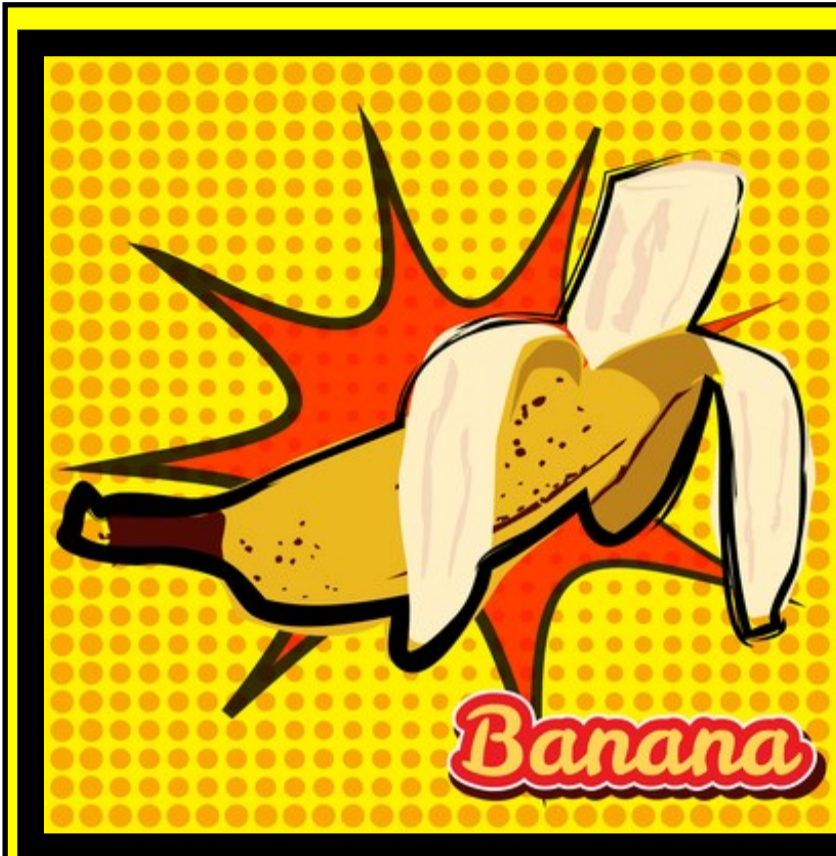
Knowledge Organiser — Pop Art



Andy Warhol



Roy Lichtenstein



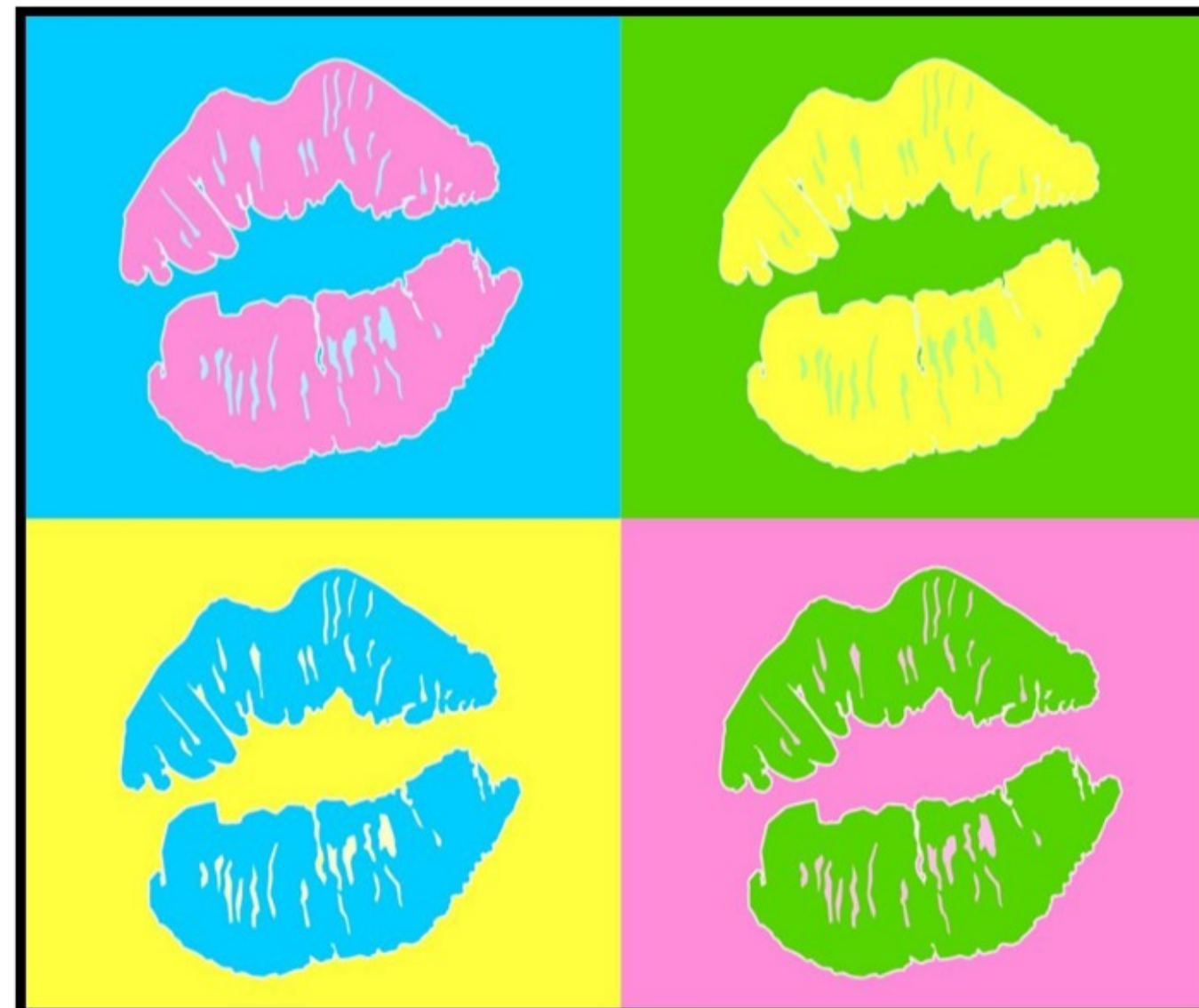
Pop Art is a style of Art from about 60 years ago. Up until the 1950s art was for rich and powerful people. Pop Artists changed that by including everyday objects in their art such as food and household items. They included very famous celebrities as well as ordinary people in their art.



What is the Pop Art Style?

vocabulary

- Cartoon:** A drawing designed to be funny.
- Collage:** Artwork made by gluing pieces of different materials to a flat surface.
- Colour Blocking:** Colour blocking is the use of bold, flat colours with no brushstrokes or implied texture
- Complementary Colours:** Two colours which are directly opposite each other on the colour wheel.
- Modern Art:** Artwork made between the 1860s and 1970s.
- Pattern:** A repeated decorative design using line, colour, and shape.
- Pop Art:** Pop Art is the art of popular and commercial culture.
- Portrait:** A drawing or painting of a person's face or body.
- Primary Colour:** A colour that cannot be made by mixing other colours (red, blue, yellow).
- Printmaking:** Making an artwork by transferring an image from one surface to another.
- Secondary Colour:** A colour made by adding two primary colours together (orange, violet, green).
- Self-portrait:** A drawing or painting which the artists makes of their own face or body.
- Stamp:** Ink or paint is applied to an image which is then transferred on to paper or another surface.
- Stencil:** A pattern that allows a substance such as paint or ink to pass on to the surface below.
- Still Life:** Art that depicts inanimate objects - such as fruit, pottery and flowers.



Bright colours

Multiple copies of the same image

Use of collage to create art

Images have black outlines

Bold, flat colours—no brushstrokes